

Important

Please don't waste resources.

- Use the duplex (2-sided-print) function if possible
- Only print in color when you need color
- Activate toner saving mode (unless print quality is absolutely necessary)
- Use the "print preview" to check if the settings are correct
- Think before you print!

Printer Pool

The printer pool is an area in the middle of the second floor of the ICT-Building. This page explains how to use the printers there.

Type	Network Address	Name	JetType Black	JetType Yellow	JetType Magenta	JetType Cyan	Windows Driver
HP Monochrome	pr216-c703.uibk.ac.at	HP LaserJet M605dn	CF281X	N/A	N/A	N/A	
Canon Color	pr210-c703.uibk.ac.at	Canon imageRUNNER ADVANCE C5550i	C-EXV 51	C-EXV 51	C-EXV 51	C-EXV 51	
HP Color	pr218-c703.uibk.ac.at	HP Color LaserJet CP3525x	S90008JET	S90010JET	S90011JET	S90012JET	download

The printers are only reachable via the IFI network, if you use WiFi please authenticate at <https://fwauth-tech.uibk.ac.at/> and keep the tab open!

You will need a c-number for the Institute (c703....) to be able to print (not a cs-number)!

Paper Types

We currently have multiple types of paper at the Institute / IFI-Printer Pool.

Name	Characteristic	Weight	Type	Canon Setting	Package Color	Link
Mondi Nautilus Classic	Grainy Texture	80 g/m ²	A4	Plain 2 (76-90 g/m ²)	GREEN	https://mymondi.net/ufp/en/brand/nautilusclassic
Mondi BIO TOP 3 extra	Yellowish Color				ORANGE	https://mymondi.net/ufp/en/brand/biotop3extra
Mondi IQ Economy+	-				RED	https://mymondi.net/ufp/en/brand/iqeconomy+
Mondi IQ Economy	-		TBD			
TBD	Blank Packaging	-	A3		TBD	

Please pay attention to which paper is currently in the printer to avoid mixing up different paper types. The differences are subtle but noticeable when directly compared.

HP LaserJet Enterprise M605dn

The printer is only reachable via the IFI network, if you use WiFi please authenticate at <https://fwauth-tech.uibk.ac.at/> and keep the tab open!

This is the default printer for fast monochrome text output. If you need advanced functionality like color printing or stapling you can install the Canon C5550i by following the steps further down on this page.

Install on GNU/Linux

Make sure you have **hplip 3.15.4** or higher installed.

1. <http://localhost:631/admin>
2. Add Printer
3. AppSocket/HP JetDirect
4. Connection: socket://pr216-c703.uibk.ac.at
5. add Name and Description:
6. Name: [IFI_BW]_HP_LaserJet_M605dn_(PS)
7. Description: [IFI BW] HP LaserJet M605dn (PS)
8. Location: IFI Printer Pool
9. Make: select 'HP'
10. Model: select HP Laserjet M604 M605 M606 Postscript (recommended) **or** HP LaserJet Series PCL 6 CUPS (en)
11. select 'Add printer'
12. Options Installed: Duplex Unit: On **or** Duplexer: installed
13. General: Two-Sided: Long-Edge Binding
14. Paper/Quality: EconoMode: On
15. Finally, select 'Set Default Options'

Install on Windows 10 / 11

Get the Basic Driver V4 from the [manufacturer website](#). Open the downloaded exe file to extract the driver to C:\HP_LaerJet_Enterprise_M605.

Install it via Devices and Printers as a local printer over TCP/IP, using the printer's hostname pr216-c703.uibk.ac.at.

Navigate to the extracted driver location and select hpev3f2a4_x64.inf.

If you have trouble please contact your system administrator.

Canon imageRUNNER ADVANCE C5550i

To use the Canon Printer you will need an ID and PIN (get these from your SysAdmin).

The printer is only reachable via the IFI network, if you use WiFi please authenticate at

<https://fwauth-tech.uibk.ac.at/> and keep the tab open!

If you struggle with the configuration you may also just send your document to the printer using the [Web Interface](#).

Install on GNU/Linux x64 (except Ubuntu or Mint!)

1. Download and extract the [PPD file](#)
2. Visit <http://localhost:631/admin>
3. Select: **Add Printer**
4. Choose Option: **Internet Printing Protocol (https)**
5. Connection: **https://pr210-c703.uibk.ac.at/ipp/print**
6. add Name and Description:
 - **Canon_iR-ADV_C5550i**
 - **[IFI Color] Canon iR-ADV C5550i**
 - **IFI Printer Pool**
7. Browse and select the previously downloaded and extracted ppd file
8. Select: **Add printer**
9. Options Installed - Paper Deck Unit: **On**; Paper Source Options: **High Capacity Cassette Feeding Unit A1**; Output Options: **Inner Finisher H1**
10. General - Colour Mode: **Colour / Greyscale** (depending on which ID you got), Media Size: **A4**
11. Canon Device Specific - User Password: **Custom**, User ID: **Custom** (enter the numeric ID and PIN you got previously from the administrative staff)
12. Paper - Paper Type: **Plain 2 (76 to 90g/m²)**
13. Finishing - Duplex: **Long edge**
14. Finally select 'Set Default Options'

or alternatively over a shell terminal:

```
sudo lpadmin -p c5550i -E -v "https://pr210-c703.uibk.ac.at/ipp/print" -i  
/path/to/canon-iradv5550i.ppd  
sudo systemctl restart cups
```

If printer is aborting check error in `/var/log/cups/` you may need `sicgsfilter` executable found here <http://linuxsoft.cern.ch/cern/updates/slc6X/i386/SRPMS/repoview/sicgsfilter.html>

Install on Ubuntu (x64) or Mint

1. Download the [CQue DEB driver](#) from the Canon Drivers page.
2. Open a shell terminal, navigate to the folder where you downloaded the driver and install the driver *manually*:

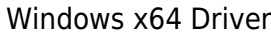

```
sudo dpkg -i CQue_v4.0.7_Linux_64_EN.deb
```

⚠ If you get an error because you've already installed a different CQue driver some time before, uninstall it and try to install the new driver again.

3. Visit <http://localhost:631/admin>
4. Select: **Add Printer**
5. Choose Option: **Internet Printing Protocol (https)**
6. Connection: **https://pr210-c703.uibk.ac.at/ipp/print**
7. add Name and Description:
 - **Canon_iR-ADV_C5550i**
 - **[IFI Color] Canon iR-ADV C5550i**
 - **IFI Printer Pool**
8. Select **Canon** from the manufacturer list
9. Find and select from the Model list the printer **Canon iR-ADV C5550/5560 PCL (en)**
10. Select: **Add printer**
11. Options Installed - Paper Deck Unit: **On**; Paper Source Options: **High Capacity Cassette Feeding Unit A1**; Output Options: **Inner Finisher H1**
12. General - Colour Mode: **Colour / Greyscale** (depending on which ID you got), Media Size: **A4**
13. Canon Device Specific - User Password: **Custom**, User ID: **Custom** (enter the numeric ID and PIN you got previously from the administrative staff)
14. Paper - Paper Type: **Plain 2 (76 to 90g/m²)**
15. Finishing - Duplex: **Long edge**
16. Finally select 'Set Default Options'

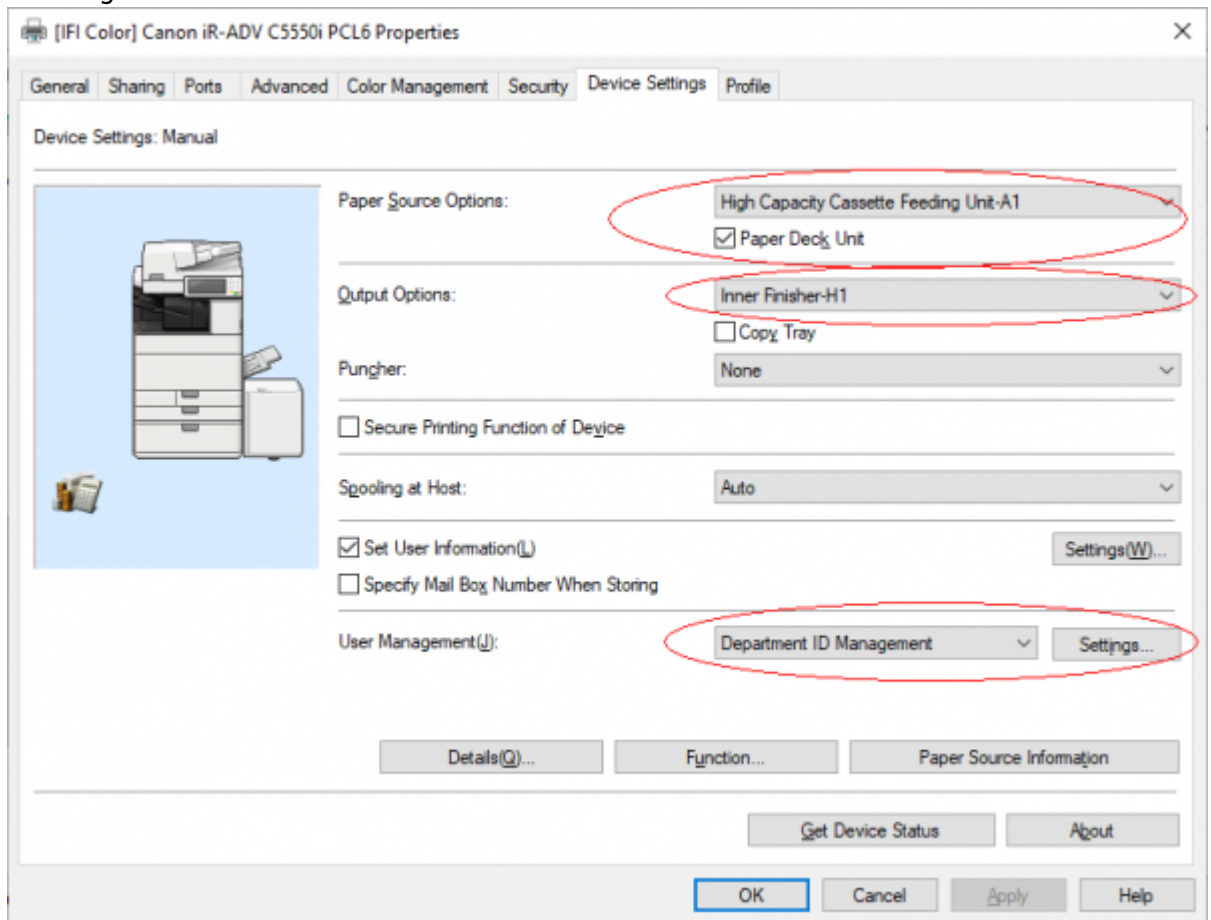
Install on Windows 11 / 10 (/ 8.1 / 8 / 7) (x64)

For **Windows 7**, prior to installing the printer driver, you need to apply a **hotfix** which enables TLS1.2 (/TLS1.1) as default secure protocol. Please get and install the hotfix [from HERE](#) - information why this hotfix is needed is explained [here](#).

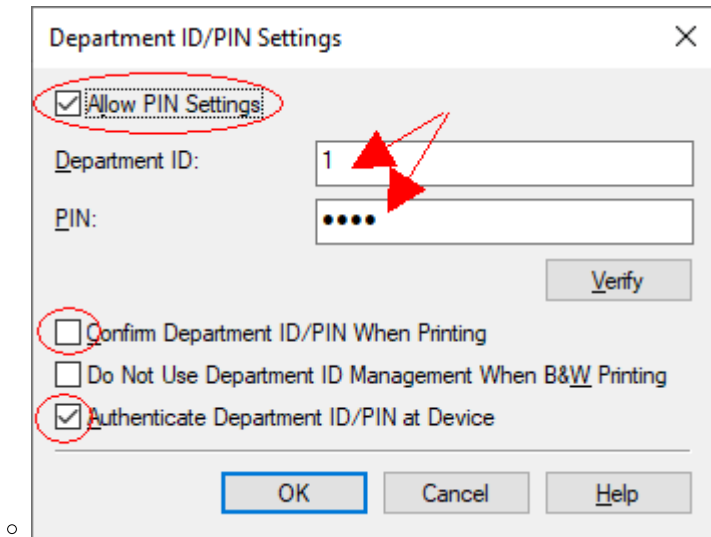
1. Download and extract the Windows x64 Driver
2. Press  + , type `control printers` and run it (or execute the command `control printers` in a CMD window)
3. Click on **Add a printer**
4. [**Win 7 only**: Select "Add a network, wireless or Bluetooth printer"]
5. Click on "The printer that I want isn't listed"
6. Choose "Select a shared printer by name" and enter **https://pr210-**

c703.uibk.ac.at/ipp/print, then click “Next”

7. In the next window, select “Have Disk”, navigate to the folder where you extracted the driver before and open the .inf file, then select OK.
8. In the printer list, select **Canon iR-ADV C5550/C5560 PCL6** and press “Next”.
9. Enter as printer name [IFI Color] Canon iR-ADV C5550i PCL6.
10. Finish the installation (don't print a test page yet).
11. Return to the “Devices and Printers” window (control printers)
12. Select the freshly added canon printer, right click, “Printer properties” navigate to tab “Device Settings” - change options:
 - o “Paper Source Options”: **High Capacity Cassette Feeding Unit-A1**
 - o directly below, check the option **Paper Deck Unit**
 - o “Output Options”: **Inner Finisher-H1**
 - o “User Management(J)”: Select **Department ID Management** in the list and click “Settings” aside



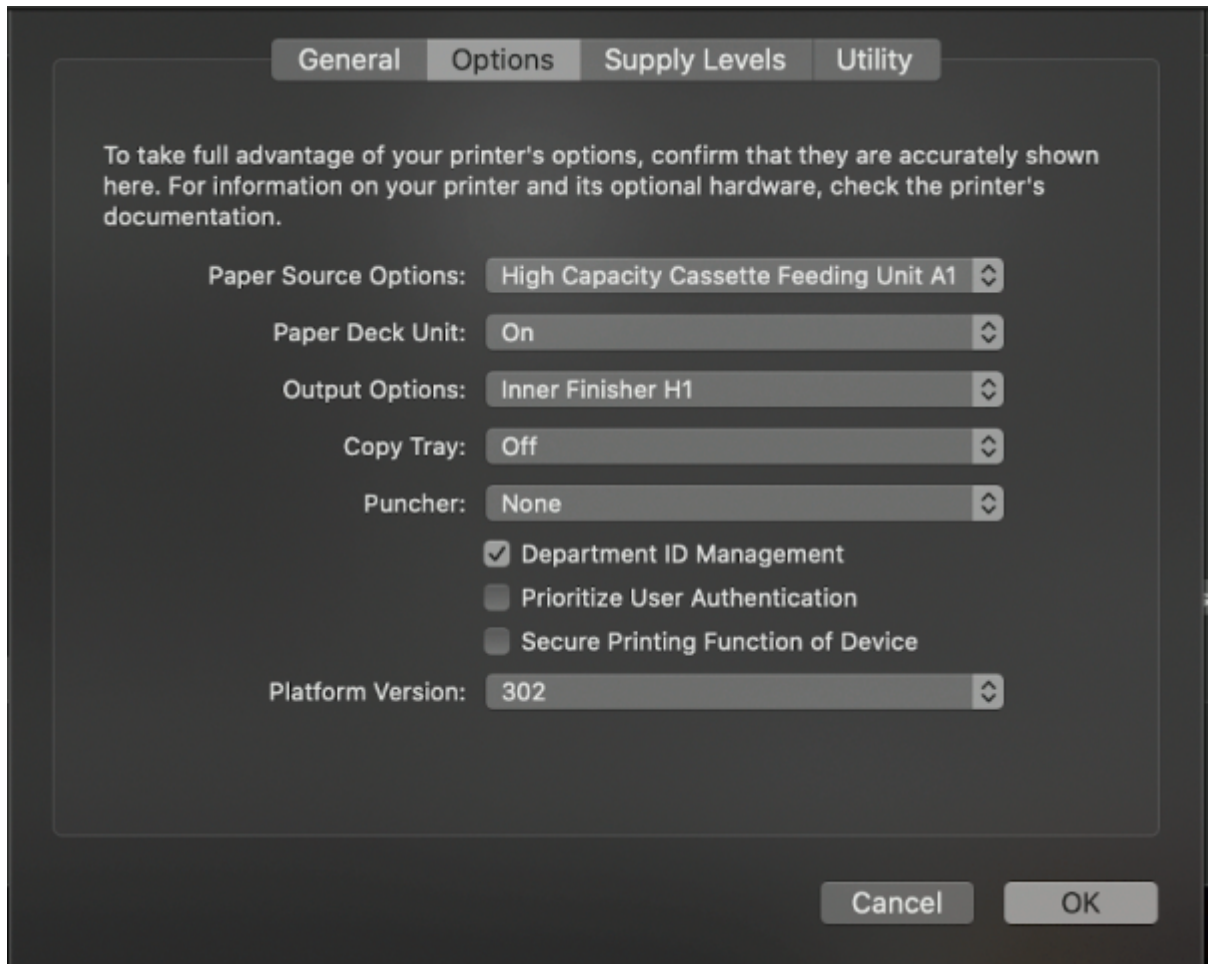
- o a new window pops up, tick the option **Allow PIN Settings** and enter the numeric ID and PIN you got previously from the administrative staff;
uncheck option “Confirm Department ID/PIN When Printing” and check option **Authenticate Department ID/PIN at Device**



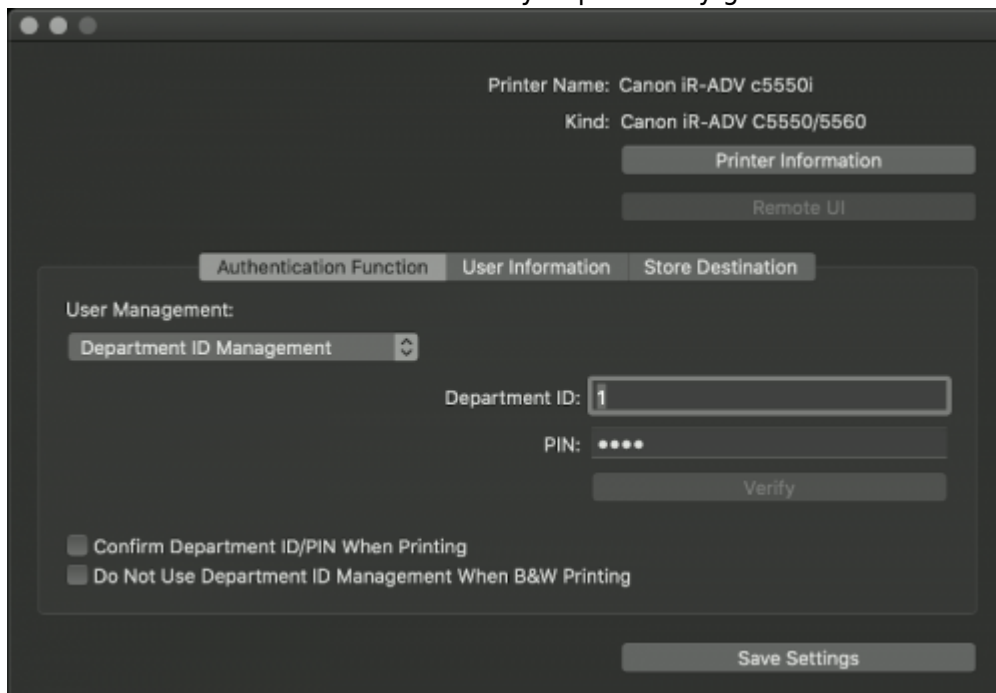
- Finally click OK on all remaining printer windows.

Install on Mac OS X

1. Go to [this page](#)
2. Download the appropriate driver for your Mac OSX version
3. Mount the *.dmg file you've downloaded via double-click and install the *.package to install the driver software
4. Add a printer via the "+" symbol in your "Printer & Scanners" settings
5. Choose **IP** at the top
6. Choose **Airprint** as Protocol
7. Enter **pr210-c703.uibk.ac.at** as Address
8. Name the printer
 - Name: **Canon iR-ADV c5550i**
 - Location: **IFI Printerpool**
9. Choose "Select Software" in the field "Use" and search for "Canon iR-ADV C5550/C5560"
10. By clicking "Add" the printer will be installed
11. To further configure the printer click on **Options & Supplies**
 - In the **Options** tab select the following options
 - "Paper Source Options": **High Capacity Cassette Feeding Unit A1**
 - "Paper Deck Unit": **On**
 - "Output Options": **Inner Finisher H1**
 - Tick the "Department ID Management" Box



-
- Next switch to the **Utility** tab and select **Open Printer Utility**
- "User Management" select **Department ID Management**
- In the field below enter the ID and PIN you previously got from the Administrative Staff



-
- Finally click Save Settings

Archive

Mircea got it running with CQue Linux Driver, install the printer (pr209-c703.uibk.ac.at - select ps queue) and modify the file /etc/cups/ppd/Canon-iR-ADV-C5030-5035.ppd adding DefaultUserID and DefaultUserPassword (restart service cups/reboot) on Fedora 24 and Ubuntu 17.01.

Toner Locations

Please refer to the following list for the locations of the different Toners

Toner Locations

From:

<https://ifi-wiki.uibk.ac.at/> - **IFI Wiki**

Permanent link:

<https://ifi-wiki.uibk.ac.at/public/printing?rev=1713279251>

Last update: **2024/04/16 16:54**